



Sustainable Architecture

Eco Design Consultants are a Chartered Architectural Practice **Passionate** about providing the **right solution** by combining architectural design and environmental knowledge, to provide economical, sustainable homes and buildings. We ensure the buildings give **delight**, are desirable, functional, easily maintained and **affordable**. Otherwise we believe true sustainability is not achieved.

We offer full Architectural services from feasibility through planning and building regulation approval to site supervision. We can help you with everything from extensions and renovations up to 5 million pound schemes and then beyond in collaboration with others.

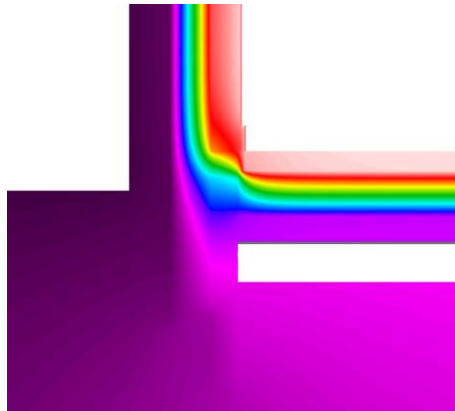
Environmental Assessments

Code for sustainable homes, EcoHomes, LEED, SAP's EPC's and Passivhaus

Housing Associations and some clients require certification for their new homes, as certified assessors we can offer Code for Sustainable Homes, Eco Homes and the American LEED (Leadership in Energy and Environmental Design) assessments. We provide help and support all the way through the process, to make it as painless for you as possible. We recommended that you appoint an assessor as early as possible to ensure a cost effective solution. We also provide support services where needed including "LZC Feasibility studies", Home user guides and SAP's and EPC's for Building regulations and HIPS.

Renovation & Retrofit

To reduce the countries carbon dioxide we need to tackle existing homes as well as new. We can help provide practical solutions to reduce fuel bills and improve the property to fulfil current requirements. We have experience of reducing a home's total CO₂ by over 80%



Passive Design & Calculation

We offer various services to ensure that the fabric of the building takes maximum advantage of free natural resources this includes; daylight calculations, thermal modelling, passive ventilation, window size optimisation, solar shading. We can provide cold bridge simulation and Ψ (psi) value calculation, allowing details to be optimised and material use minimised. We can also provide Passive House Planning Package (PHPP) calculations.

Renewable Technologies

Many local authorities and some clients now require energy and carbon dioxide to be reduced using LZC (low or Zero Carbon) Technologies. We can help you in selecting an appropriate solution and provide the appropriate report required, whilst insuring that it is in budget and also considers long term maintenance costs and effectiveness over a 60 year period. At the same time insuring full integration and aesthetics.



CPD's & Training

Eco Design Consultants offer a comprehensive series of CPD's aimed at raising awareness and knowledge of sustainability relating to housing. Sessions are customised to individual requirements. Please call or see our website for further details and special offers.



Printed on chlorine free
100% post-consumer
recycled paper

eco design
consultants

A The Mansion, Bletchley Park
Milton Keynes, MK3 6EB

T 01908 363490

E studio@ecodesignconsultants.co.uk

W www.ecodesignconsultants.co.uk