

A Fully Integrated Sustainable Working Drawing Package

I am sure you would agree that successful detailing of projects is vital for the project's success, this is especially important for highly sustainable developments. We can provide you with a service that combines our many years of Architectural design and detailing with environmental assessment to provide an integrated service that will be:

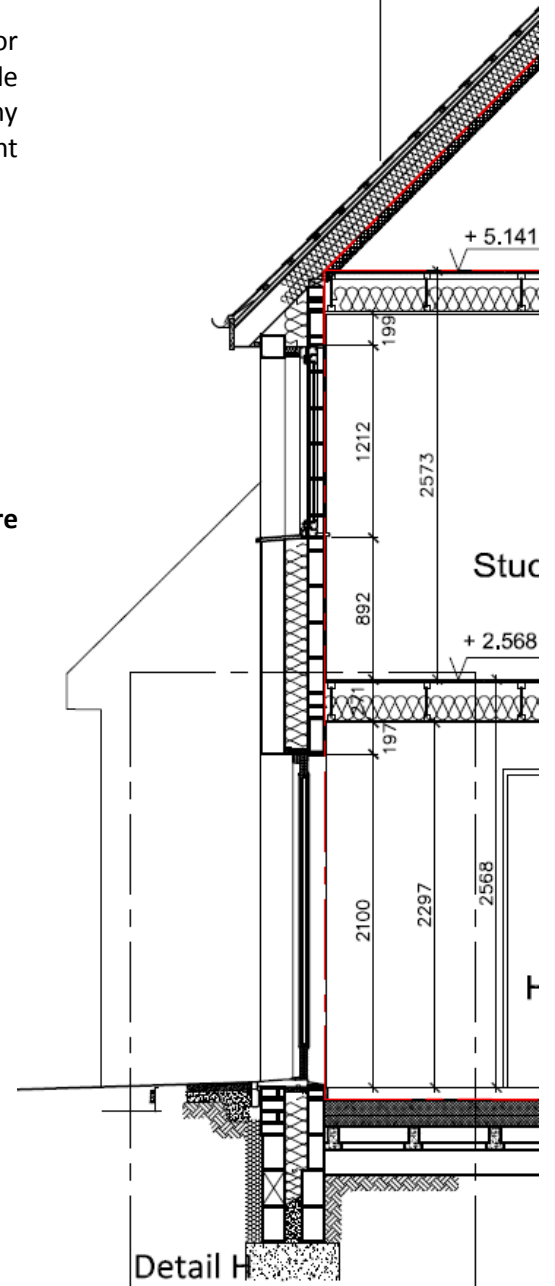
- **Reliable, accurate and cost effective**
- **Fully integrated with code for sustainable homes (CSH)**
- **Provide supporting evidence, required for CSH**
- **Achieve high levels of air tightness**
- **Achieve good 'U' value's**
- **Benefit from experience of Passivhaus detailing & design**
- **Reduce cold bridging**
- **Minimise renewable technologies & fully integrate where appropriate**
- **Benefit from experience of designing CSH 5* homes**
- **Ensure appropriate selection of sustainable materials**

"Alan and his team have produced drawings that are clear to work from and meticulous in their detail, helping us towards our goal of producing a functioning, low energy, sustainable home. Their enthusiasm and communication, on our behalf, with suppliers of specialist's products has been especially helpful.

Scott Nichols, EcoLogic Construction

Free thermal bridging analysis!

For the next two working drawing packages commissioned we are offering the free analyses of four details. So book today to avoid disappointment.



Cold Bridge Elimination

As part of our working drawing package we offer 2D computer analysis of details utilising software to highlight cold bridging weak points, enabling corrections to be made. This process also provides a Ψ (psi) values enabling better results in both PHPP (Passivhaus planning package) and SAP (standard assessment procedure). It will also ensure your project;

- Saves money at construction
- Reduces unnecessary materials
- Reduces the risk of condensation
- Ensures buildability
- Improves your SAP / PHPP ratings
- Saves money and CO₂ on fuel
- Increases comfort for the owner / tenant

Did you know that on highly efficient buildings, poorly designed joints between elements can double the heat loss of a building? We can solve this through computer analysis and careful detailing.

"We found eco design consultations work on the cold bridging invaluable, they were able to reduce the cold bridging considerably on our refurbishment project. It did not make the details any thicker and on one of the details they improved the efficiency of the house by 15% just by changing detailing and material specification"

Gil Schalom, Gil Schalom Design

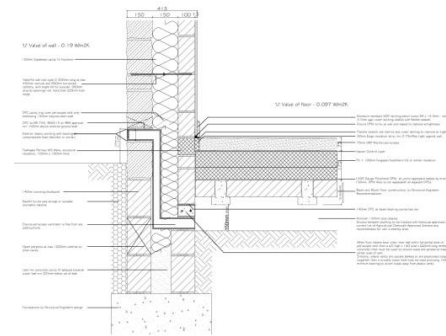
Contact us today, find out how you can benefit from our integrated environmental working drawing package.

Email: studio@ecodesignconsultants.co.uk or call Alan on 01908 363490.

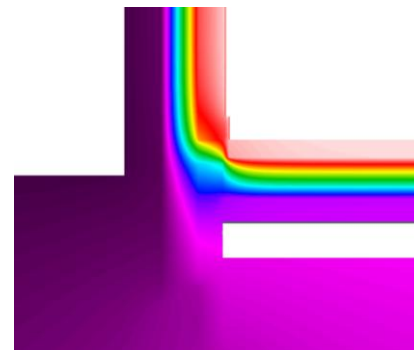
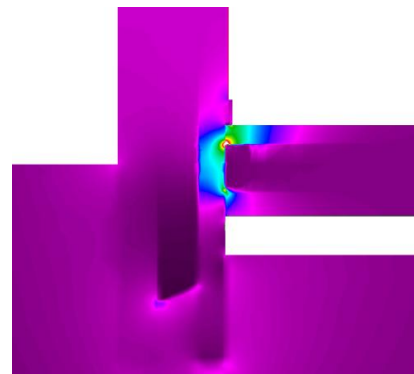


Printed on chlorine free
100% post-consumer
recycled paper

© Eco Design Consultants Limited, all rights reserved, registered in England, Number: 6780480



Ground Floor Detail



eco design
consultants

A The Mansion, Bletchley Park
Milton Keynes, MK14 5DZ
T 01908 363490

E studio@ecodesignconsultants.co.uk

W www.ecodesignconsultants.co.uk